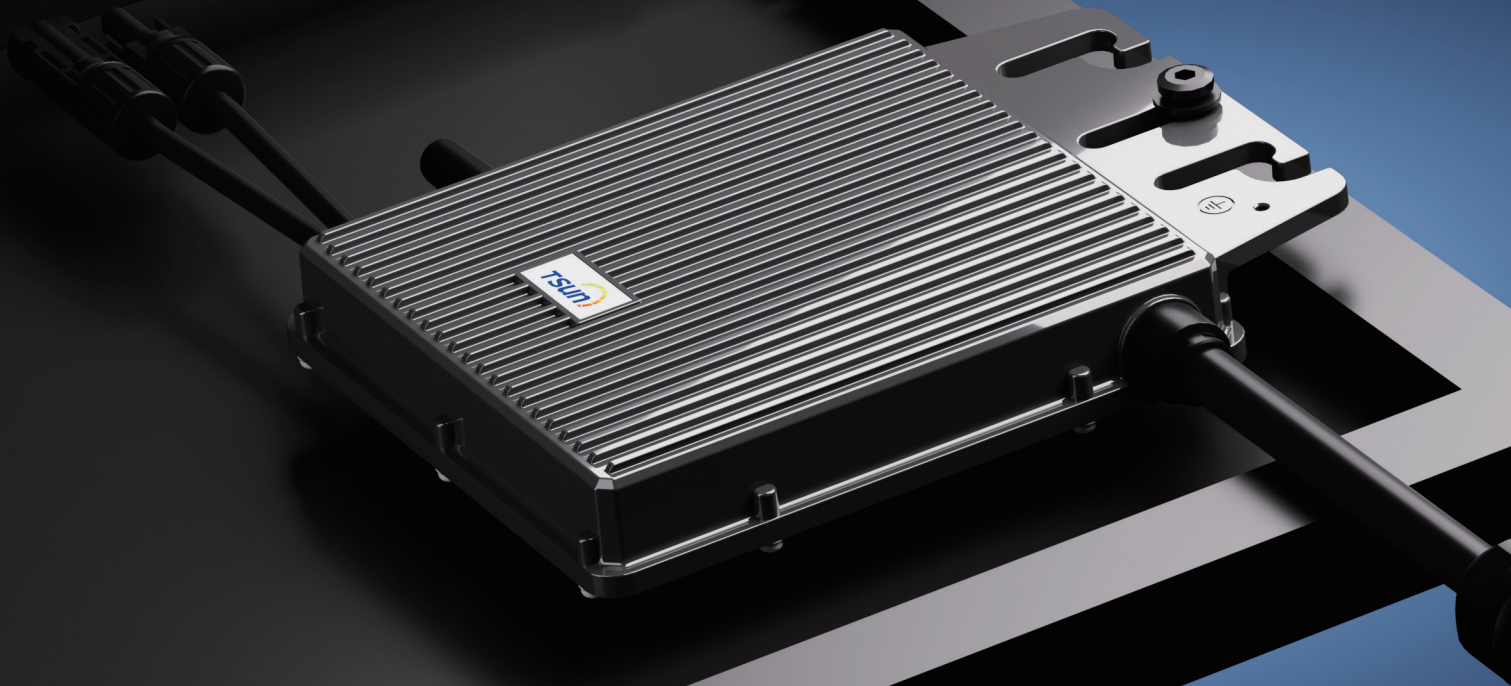


TSUN Balcony Microinverter



TSOL-MS300 Balcony / TSOL-MS350 Balcony / TSOL-MS400 Balcony
TSOL-MX400 Balcony / TSOL-MX450 Balcony / TSOL-MX500 Balcony



Maximized Efficiency

Individual optimization, se-parate dedicated MPPT for each panel.

New topology design, max. efficiency up to 96.7%.

Flexibility

Suitable for TSOL-ESK series AC module solution.

Plug & play installation, Easy to install.

Safety

Max. DC voltage 60V. No threat for high DC voltage.

Integrated LoM protection function. Ensure the safety of power grid.

Reliability

Die casting design and glue filling technology. Better thermal dissipation.

Standard 12 years warranty, Quality guaranteed.

CE VDE 4105 EN 50549

TSUNESS Co., Ltd

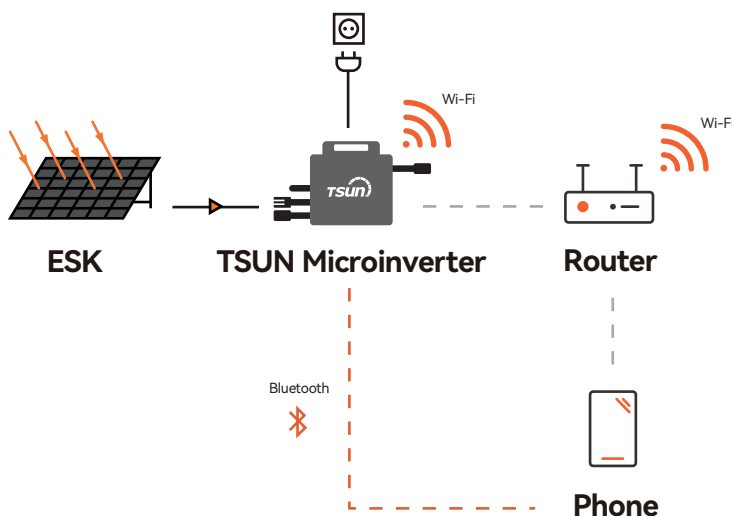
sales@tsun-ess.com www.tsun-ess.com +86-512-66186028

Technical Data

Model	TSOL-MS300 Balcony	TSOL-MS350 Balcony	TSOL-MS400 Balcony	TSOL-MX400 Balcony	TSOL-MX450 Balcony	TSOL-MX500 Balcony
Input(DC)						
Recommended Module Power [W]	300-550+	300-550+	300-550+	300-600+	300-600+	300-600+
Start up Voltage [V]				22		
MPPT Voltage Range [V]				16-60		
Max. Input Voltage [V]				60		
Max. Input Current [A]				14		
Max. Input Short-circuit Current[A]				20		
Output [AC]						
Max. Continuous Output Power [VA] ¹⁾	300	350	400	400	450	500
Max. Output Current [A]	1.45	1.59	2	2	2.25	2.5
Nominal Output Voltage [V] ²⁾				230, L/N/PE		
Nominal Frequency [Hz] ²⁾				50		
Power Factor				>0.99 default		
Efficiency						
Peak Inverter Efficiency				96.7%		
Nominal MPPT Efficiency				99.9%		
Night Time Power Consumption [mW]				< 50		
General Data						
Dimensions [WxHxD mm]				178 * 153 * 28		
Weight [kg]				1.5		
Operating Ambient Temperature Range [°C] ³⁾				-40 °C to 65°C		
Cooling				Natural Convection		
Type of isolation				Galvanically Isolated HF Transformer		
Type of Enclosure				IP67		
DC Connector Type				QC4 (Stäubli MC4 Optional)		
Compliance	CE-RED, EN 50549-1: 2019, VDE-AR-N 4105: 2018, CEI 0-21: 2022, TOR, Synergrid					
Power Cord (Optional)						
Wire Size				1.5mm ²		
Cable Length ⁴⁾				5m / 10m / 20m		
Plug Type ⁴⁾				Schuko		
Monitoring						
Communication				Built-in WiFi module		
Energy Management				Talent Home App / TSUN Smart App		

- 1) The output power of microinverter can be limited to 300W / 600W according to the local regulations.
- 2) The AC voltage and frequency range may vary depending on specific country grid.
- 3) The microinverter may derate under poor ventilation and heat dissipation installation environment.
- 4) The length and plug type can be customized.

Diagram



Monitoring Platform



TSUN Smart is an **Energy Monitoring Mobile Application Software**. Users can use TSUN Smart to monitor the real-time operation of the entire pv power generation system.

Monitor Generation Data of Solar Plant

One-button to Connect Network

Power Generation Statistics

Module-level Monitoring System

Fast Network Configuration